

PLAN EPP150084

0 10 30 50

The intended plot size of this plan is 432mm in width by 560mm in height (C-size) when plotted at a scale of 1:500 METRIC.

- ⦿ Denotes Non-Standard Iron Post Found
- Denotes Standard Iron Post Found
- Denotes Lead Plug Found
- Denotes Standard Iron Post Set
- △ Denotes GNSS Control Point Set

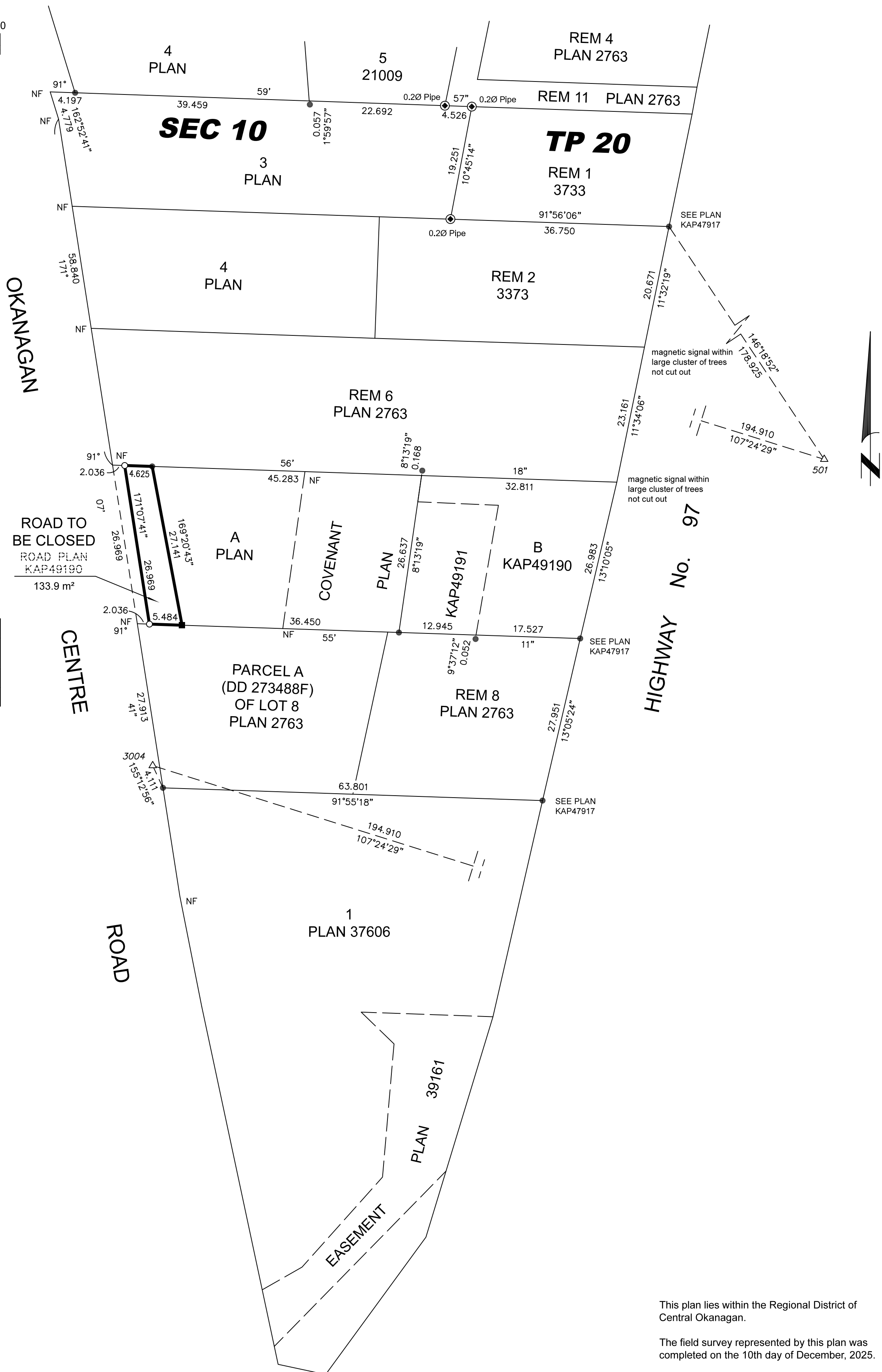
Distances shown are horizontal, ground-level distances, in metres and decimals thereof.

Grid bearings are derived from GNSS observations and are referred to the central meridian of UTM Zone 11.

The UTM coordinates and estimated absolute accuracy achieved are derived from dual frequency GNSS observations to active control points 987020 (CHWK) and 887006 (DRAO).

This plan shows horizontal ground-level distances unless otherwise specified. To compute grid distances, multiply ground-level distances by the average combined factor of 0.99989868. The average combined factor has been determined based on an ellipsoidal elevation of 418.3 metres.

NAD83(CSRS) 2002.0 UTM ZONE 11 COORDINATES			
Point	Northing	Easting	Absolute Accuracy
501	5543950.03	327773.18	0.03
3004	5544008.34	327587.21	0.03



This plan lies within the Regional District of Central Okanagan.

The field survey represented by this plan was completed on the 10th day of December, 2025.

Simone Porcellato, BCLS #961