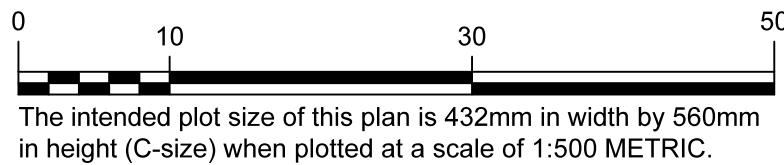


PLAN EPP150085

- CLOSED ROAD, SEC 10, TP 20, ODYD, PLAN EPP150084
- LOTS 2 AND 6, SEC 10, TP 20, ODYD, PLAN 3373 EXCEPT PLAN KAP47917
- LOTS A AND B, SEC 10, TP 20, ODYD, PLAN KAP49190
- PARCEL A (DD 273488F) OF LOT 8, SEC 10, TP 20, ODYD, PLAN 2763
- LOT 8, SEC 10, TP 20, ODYD, PLAN 2763 EXCEPT PARCEL A (DD 273448F) AND PLAN KAP47917

BCGS 82L.003
SCALE 1:500 METRIC



LEGEND

- ⊙ Denotes Non-Standard Iron Post Found
- Denotes Standard Iron Post Found
- Denotes Lead Plug Found
- Denotes Standard Iron Post Set
- ▲ Denotes GNSS Control Point Found
- Wt Denotes Witness

This plan shows one or more witness posts which are not set on the true corner(s).

Distances shown are horizontal, ground-level distances, in metres and decimals thereof.

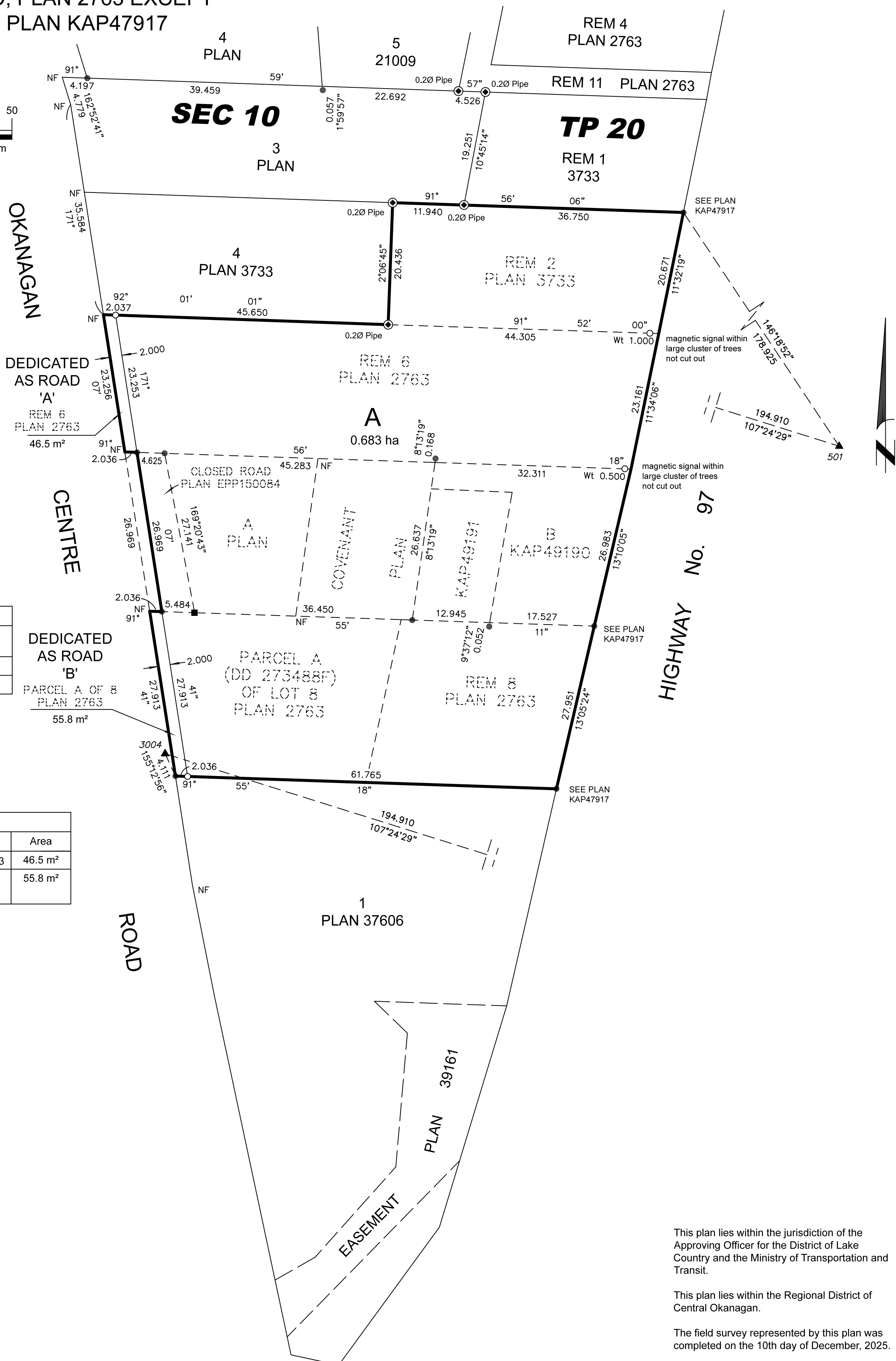
Grid bearings are derived from GNSS observations and are referred to the central meridian of UTM Zone 11.

The UTM coordinates and estimated absolute accuracy achieved are derived from dual frequency GNSS observations to active control points 987020 (CHWK) and 887006 (DRAO).

This plan shows horizontal ground-level distances unless otherwise specified. To compute grid distances, multiply ground-level distances by the average combined factor of 0.99989868. The average combined factor has been determined based on an ellipsoidal elevation of 418.3 metres.

NAD83(CSRs) 2002.0 UTM ZONE 11 COORDINATES			
Point	Northing	Easting	Absolute Accuracy
501	5543950.03	327773.18	0.03
3004	5544008.34	327587.21	0.03

BOOK OF REFERENCE - ROAD DEDICATIONS		
Area	Legal Description	Area
'A'	REM LOT 6, SEC 10, TP 20, ODYD, PLAN 3373	46.5 m ²
'B'	PARCEL A (DD 273488F) OF LOT 8, SEC 10, ODYD, PLAN 2763	55.8 m ²



This plan lies within the jurisdiction of the Approving Officer for the District of Lake Country and the Ministry of Transportation and Transit.

This plan lies within the Regional District of Central Okanagan.

The field survey represented by this plan was completed on the 10th day of December, 2025.

Simone Porcellato, BCLS #961